
Color Optimizer Administrator Guide

**Version 1.0
September 14, 2006**

Color Optimizer

The Color Optimizer is a plug-in developed for the KX Driver. The objective of the Color Optimizer is to help the End User sample and/or select from a variety of color shades that best match the target color on the document to be printed. The User will be provided with a color matrix that will help them to modify one color that he/she chooses for a given print job from an application open on the desktop. The color optimizer will modify the value of Hue and Lightness for the selected color that will be used to overwrite the KX Driver custom color settings. The plug-in will be available as windows DLL that can be installed with the help of the KX Driver post installer. It will be shown as an icon in the "Advanced Tab" of the printing preferences.

The following system requirements are recommended for installation of the Color Optimizer.

Operating System

Windows98/Me/NT4.0/2000/XP/2003

Hardware

Intel Pentium® III processor, 600 megahertz (MHz) or faster

At least 256 megabytes (MB) of dedicated random-access memory (RAM)

At least 500 MB of available hard-disk space

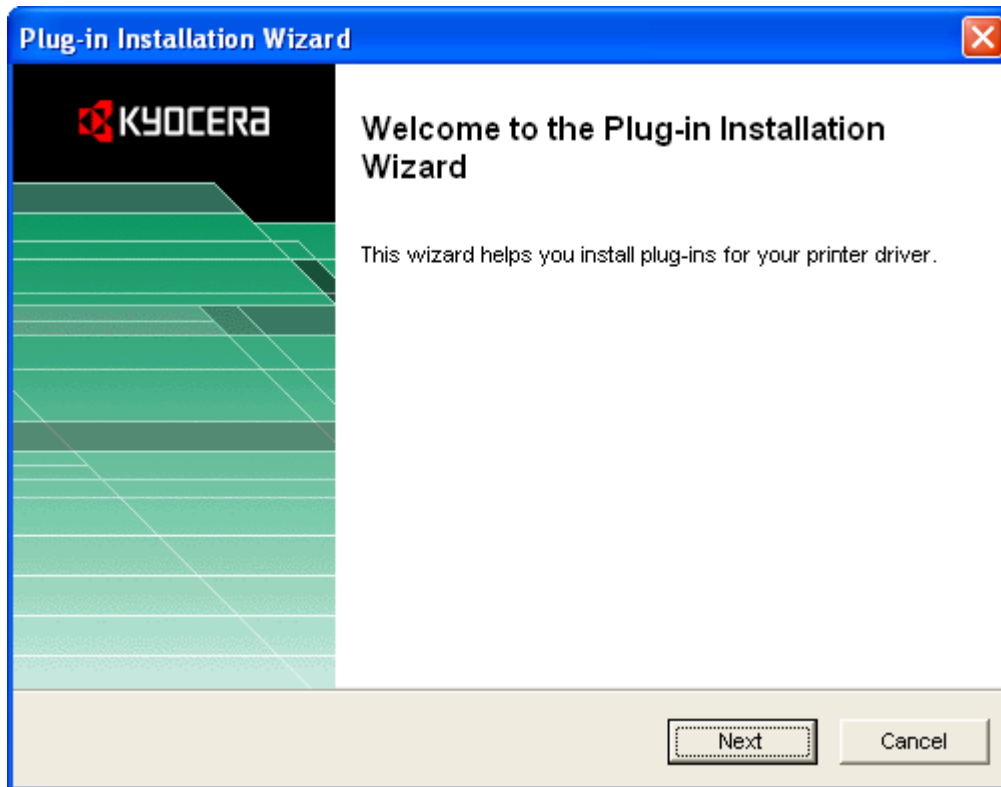
A properly installed and configured network interface card using TCP/IP protocol

Version

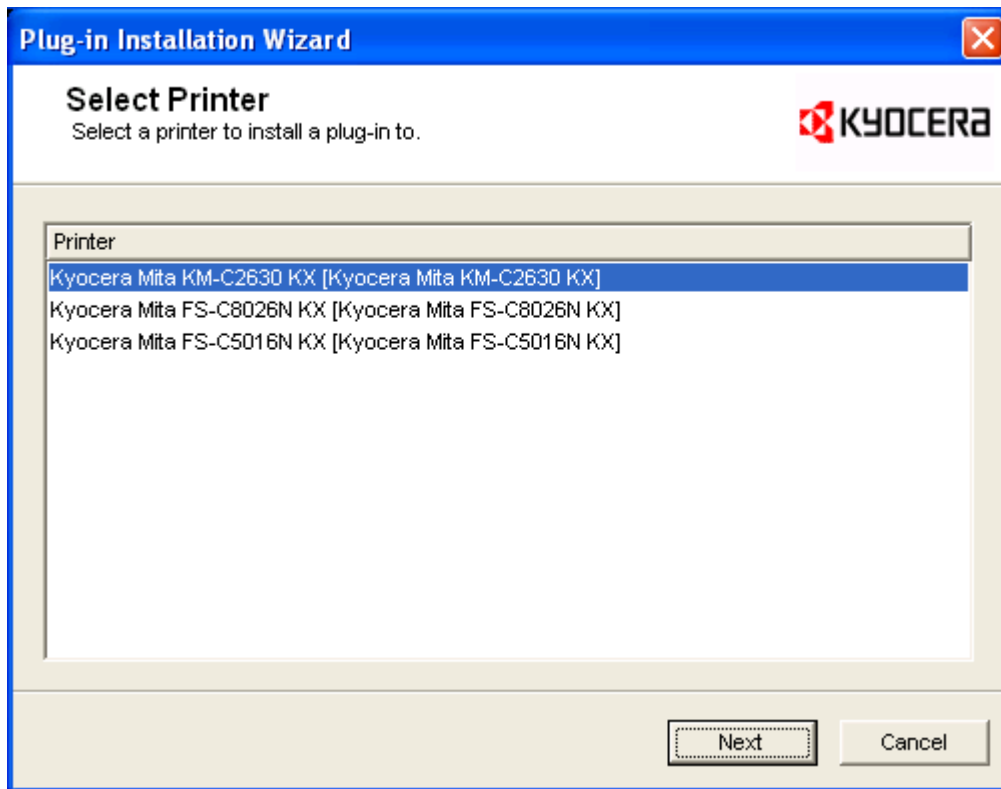
The latest version of the Color Optimizer is 4.1.1.0905.

Installation of Color Optimizer:

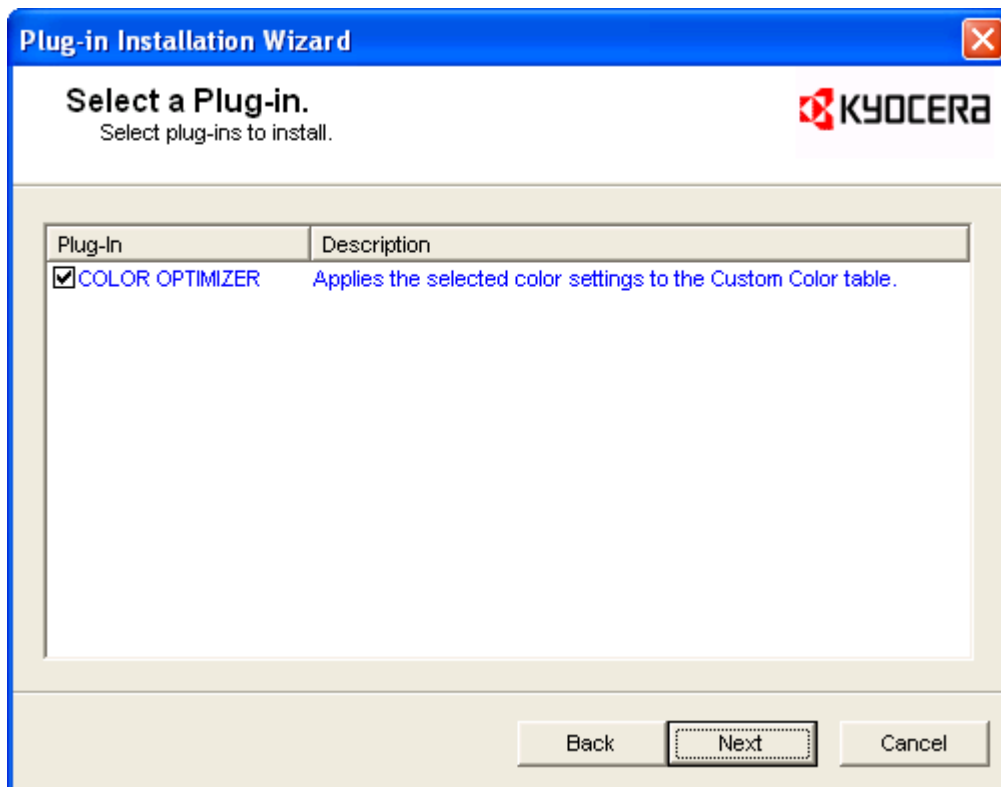
The Color Optimizer can be installed with the KX Driver Plug-In Installer. The Plug-In Installer copies the KXColor.DLL file into the C:\WINDOWS\system32\spool\drivers\w32x86\3 directory. The DLL can be installed and is available only for the KX Driver versions 4.1.1805 and above. The following are the steps to install the Color Optimizer using the plug-in installer. Click the PlunInst.exe file in the installer to show the screen below.



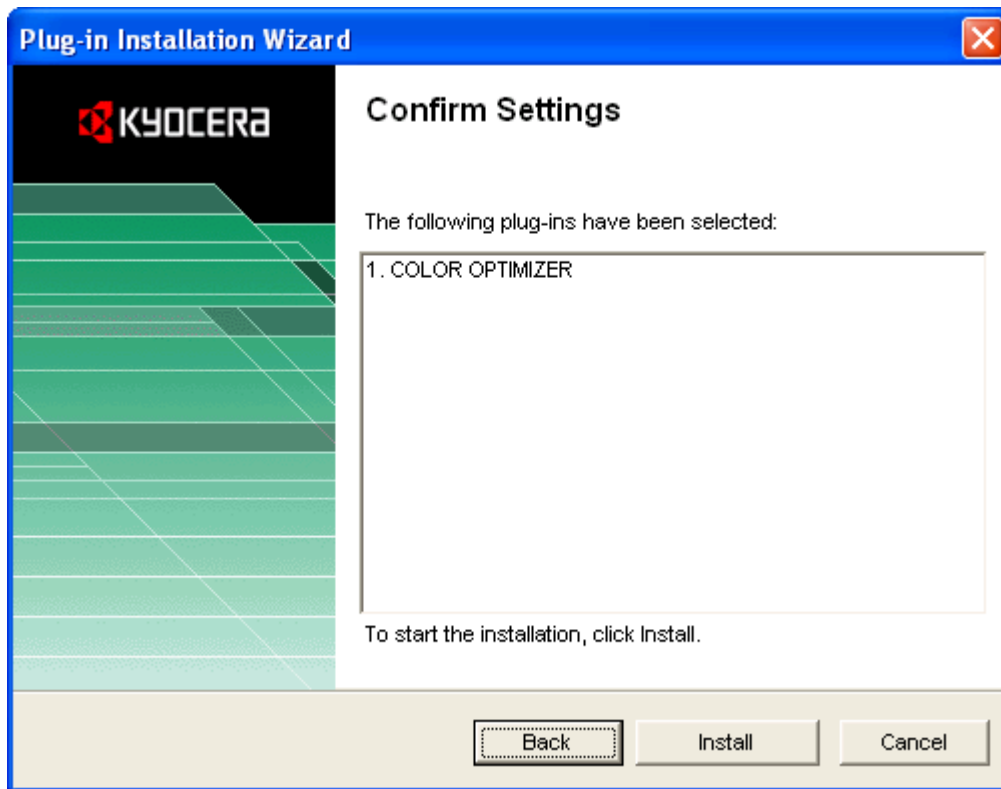
Click next to see a list of printer drivers installed on your system that the color optimizer is available for.



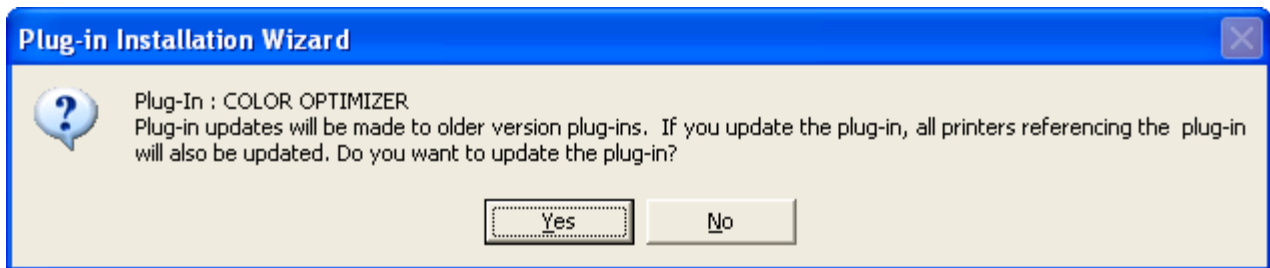
Choose a printer driver and click next to choose the color optimizer plug-in.



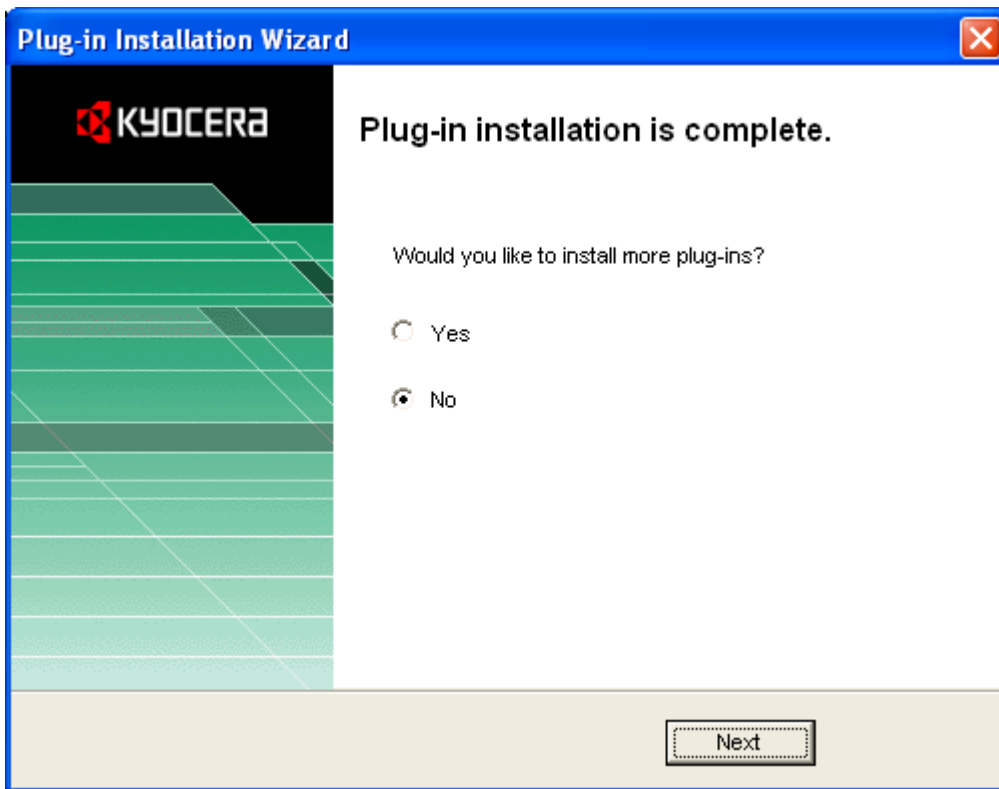
Select the plug-in and click next to show the confirmation screen.



Click Install to continue installation. If an older version of the DLL is already present in the windows systems folders the following message will appear.

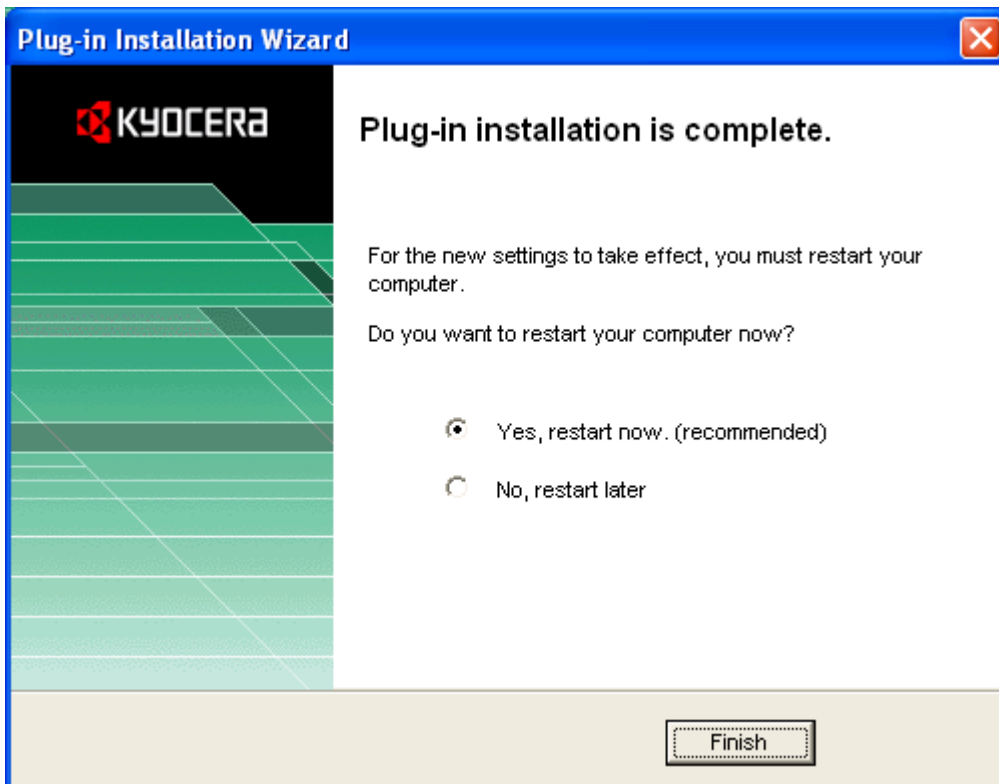


Click 'Yes' if you want to overwrite the older version. If you click 'No' the installer will not install the Color Optimizer on your driver. Once the installation is complete the following screen appears.



Select No and click Next. The installer will then prompt you to restart the computer. This is recommended for proper installation of the plug-in.

Note: If you have multiple color printers installed and wish to update all of the drivers choose “yes” and repeat the process for the other desired printers.



Select 'Yes' and click Finish. Once the computer is restarted the user will see color optimizer appear in the "Advanced Tab" of the appropriate driver.

Installation of the Color Optimizer in Client/Server environment:

On the server side the installation must follow the below listed steps:

- Disable the sharing of the printer to install the plug-in.
- Run the installer as detailed in this technical bulletin.
- Restart the computer.
- Enable the sharing of the printer.

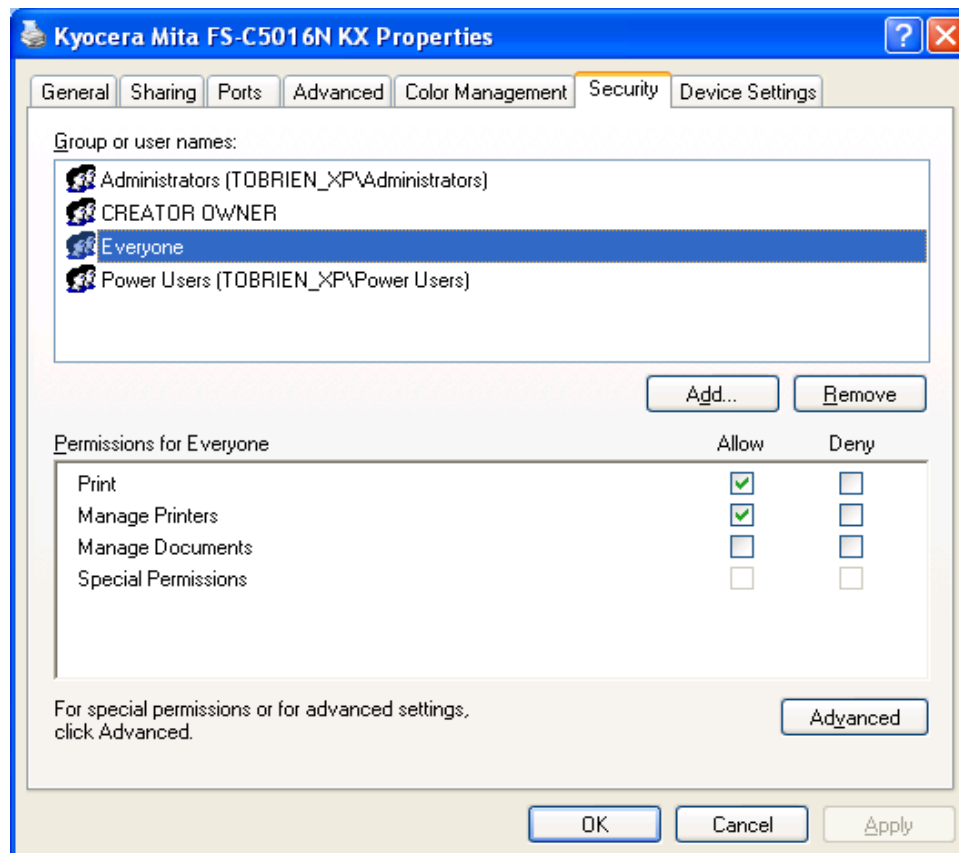
On the Client side the installation has to follow the below listed steps:

- If the client has the printer driver from server side, delete the connection.
- Reconnect to the server's printer.

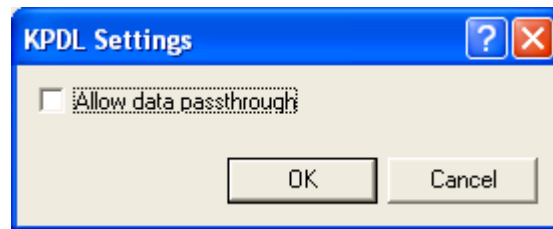
This DLL can also be added to the KX Driver from the "About Button" on the Device Settings Tab in the Printer properties. The Color Optimizer plug-in will then appear as an icon on the Advanced Tab in the printing preferences.

Permissions for Color Optimizer:

In the client/server environment for the Color Optimizer to work efficiently the "Manage Printer" permissions always should be enabled. Please contact your network administrator to enable these permissions.

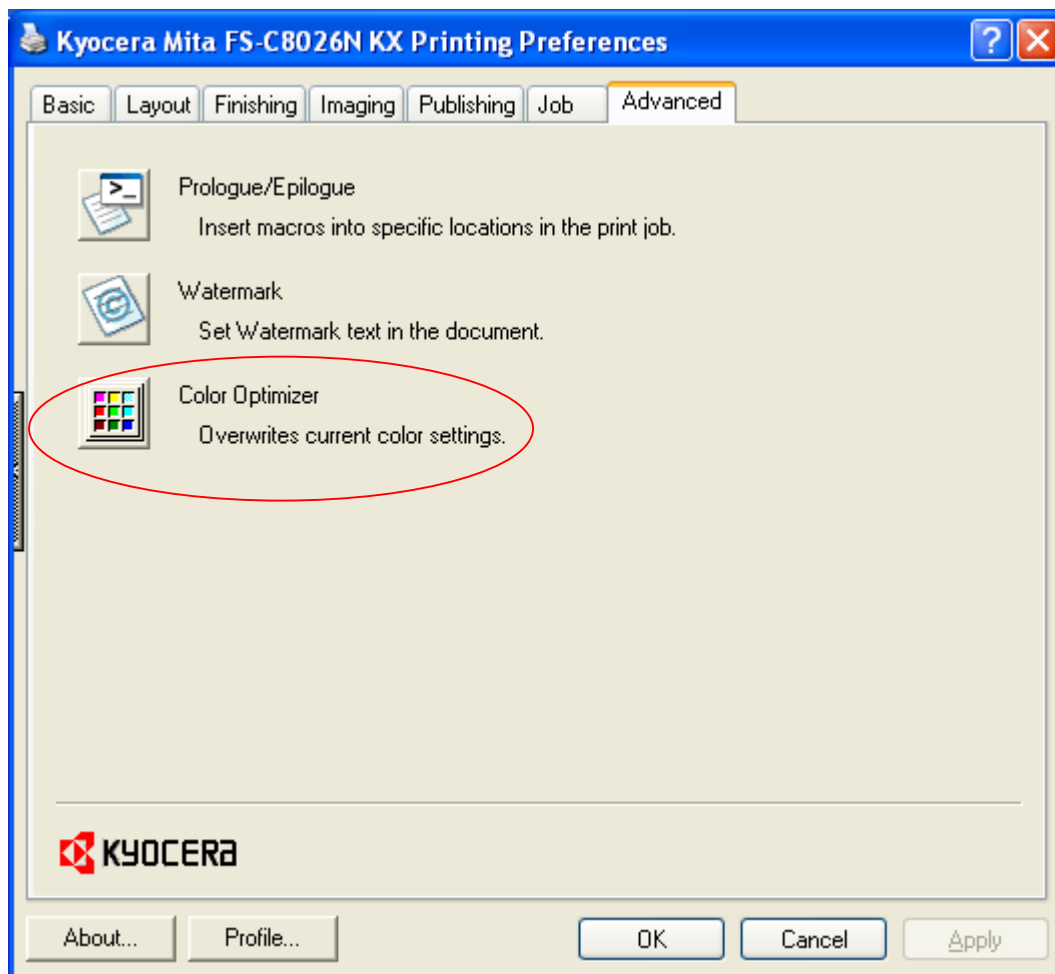


This plug-in does not support "Passthrough mode". If you are using KPDL, please turn off the passthrough setting.

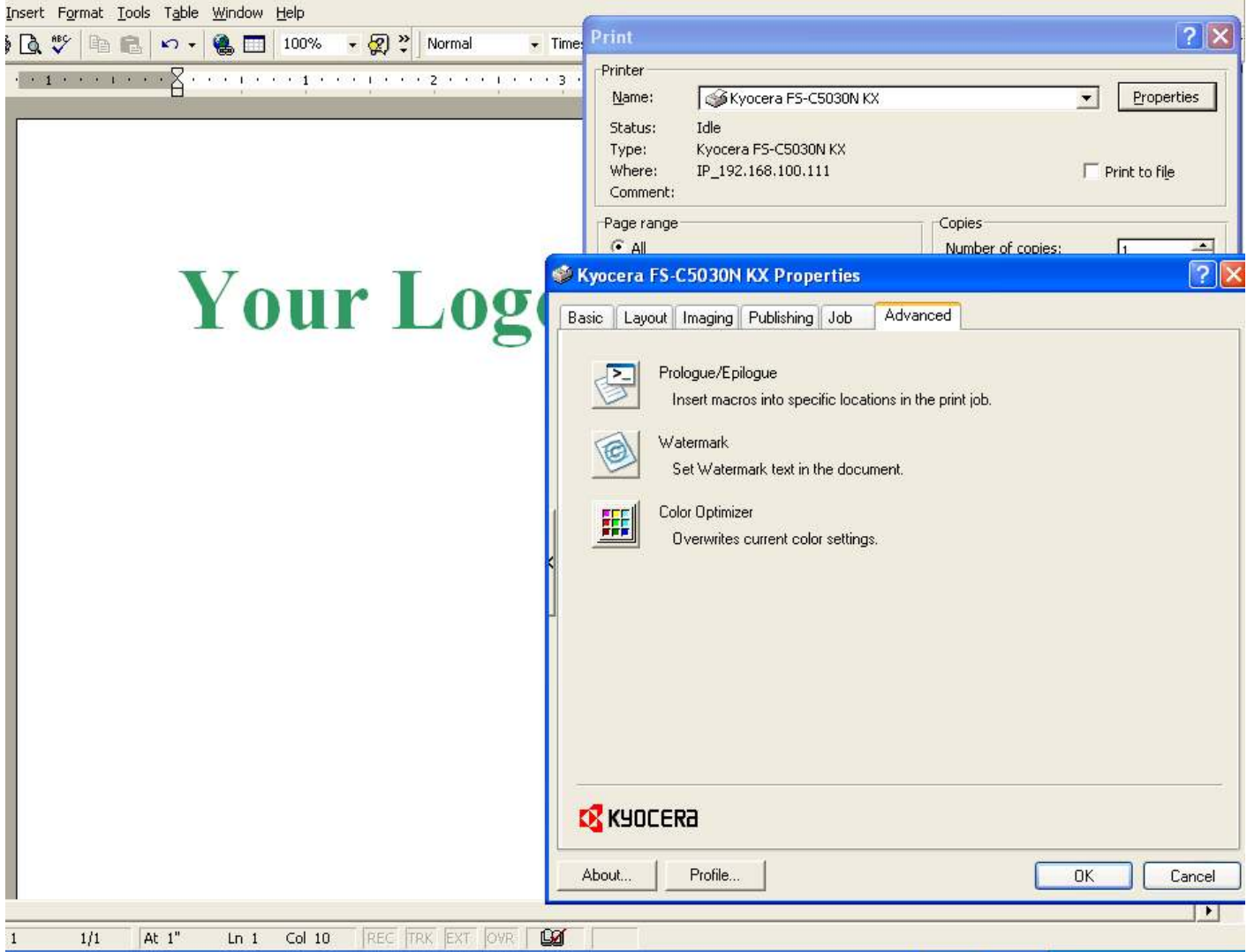


Using the Color Optimizer

The Color Optimizer utility is a dialog-based application. The plug-in will be shown as an icon on the advanced tab as shown below.



The plug-in can also be seen from an application when you give it a print command. From any application open the Print dialog by clicking File -> Print. The user shall move the dialog away from the area on the application he/she wants to choose the color from. This can be seen from the sample document below. For example if the user wants to choose the color maroon then he/she should move the dialogs away from the area as and when they open.



The screenshot shows a word processing application window with a menu bar (Insert, Format, Tools, Table, Window, Help) and a toolbar. The main document area contains the text "Your Logo" in a large green font. Two dialog boxes are open:

- Print Dialog:** Shows printer information for "Kyocera FS-C5030N KX". Fields include Name, Status (Idle), Type, Where (IP_192.168.100.111), and Comment. It also has a "Print to file" checkbox, "Page range" (set to All), and "Copies" (set to 1).
- Kyocera FS-C5030N KX Properties Dialog:** Has tabs for Basic, Layout, Imaging, Publishing, Job, and Advanced. The Advanced tab is selected, showing options for:
 - Prologue/Epilogue:** Insert macros into specific locations in the print job.
 - Watermark:** Set Watermark text in the document.
 - Color Optimizer:** Overwrites current color settings.The dialog also features the KYOCERA logo and buttons for "About...", "Profile...", "OK", and "Cancel".

The status bar at the bottom of the application shows: 1 | 1/1 | At 1" | Ln 1 | Col 10 | REC | TRK | EXT | OVR.

Once you select the Color Optimizer the following screen will display.

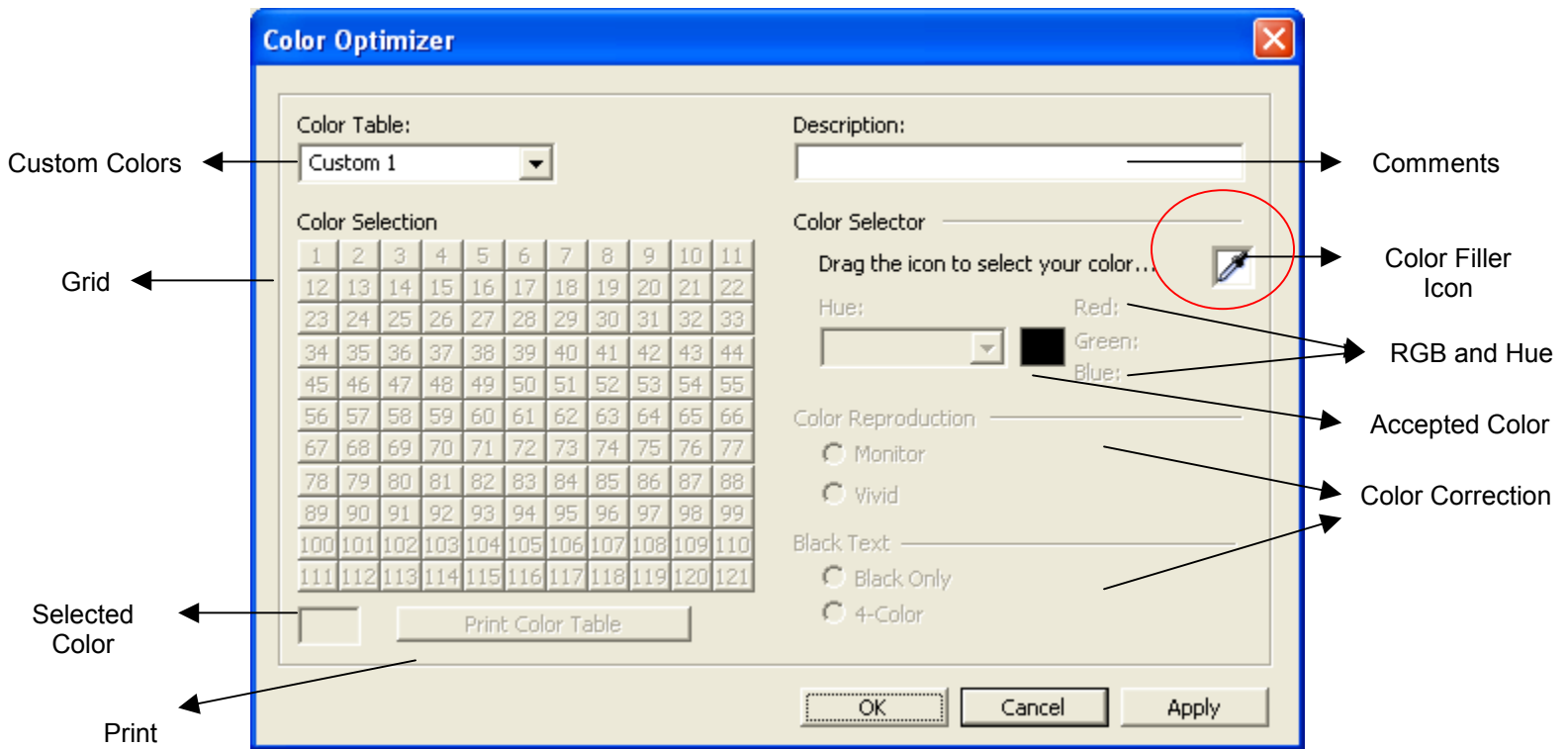
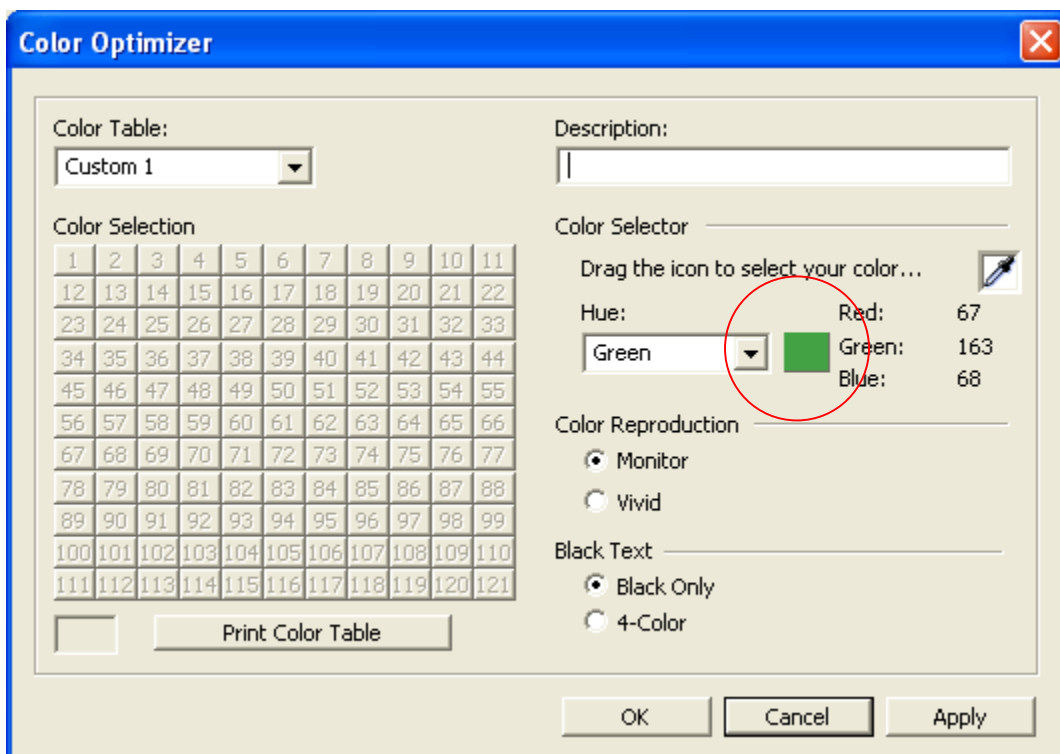


Fig 1: Color Optimizer

The screen above shows all the controls available on the color optimizer. The drop down menu in the Color Table enables the User to choose from any of the three Custom colors. These custom colors are similar to the three custom colors provided by the KX Driver. When the user makes changes to a custom color on the color optimizer and saves it the color optimizer will overwrite the corresponding color in the KX Driver settings. The User can also use the description field to enter a comment for each custom color. The length of the description can be up to 30 characters.

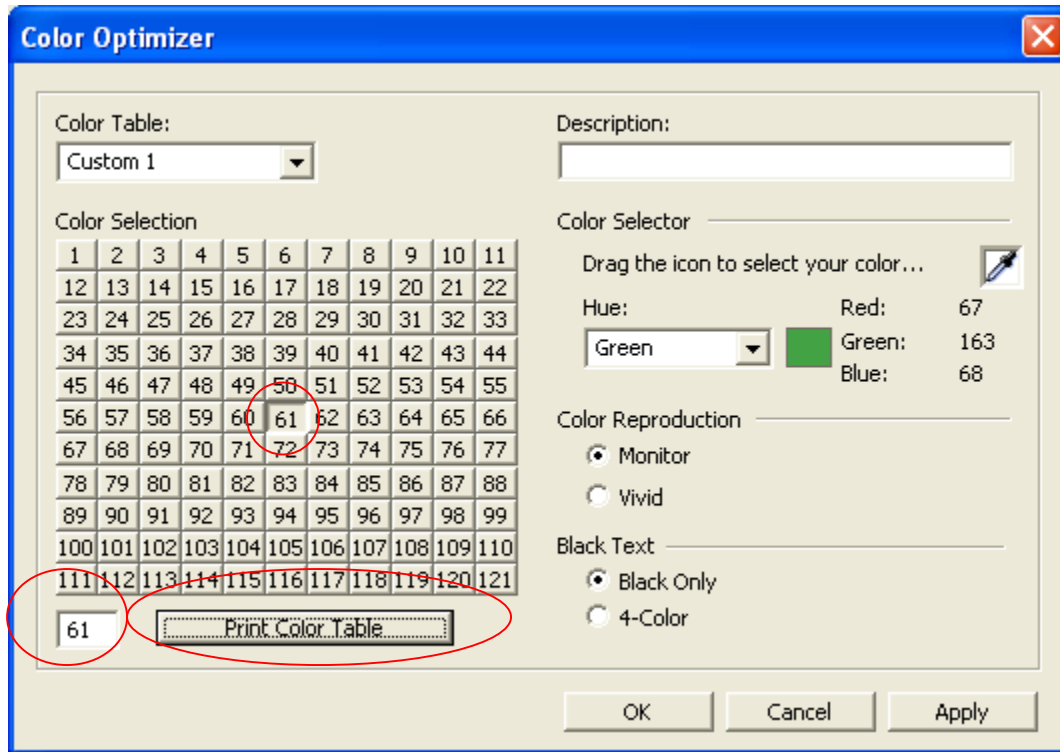
Selecting a Color with the Color Optimizer

To choose a color from the desktop, click on the Color Filler Icon in the Color Selector section. Your mouse pointer will change to the filler icon. Drag it onto the application that has the target color and release it. The filler picks the color and fills the square in the Color Selector section with the current accepted color. For example if the user picks a shade of “Green” from an application, the square is filled with Green also showing its RGB and Hue values as determined by the plug-in. The Color Reproduction options and the Print Color Table button are also enabled simultaneously as shown.

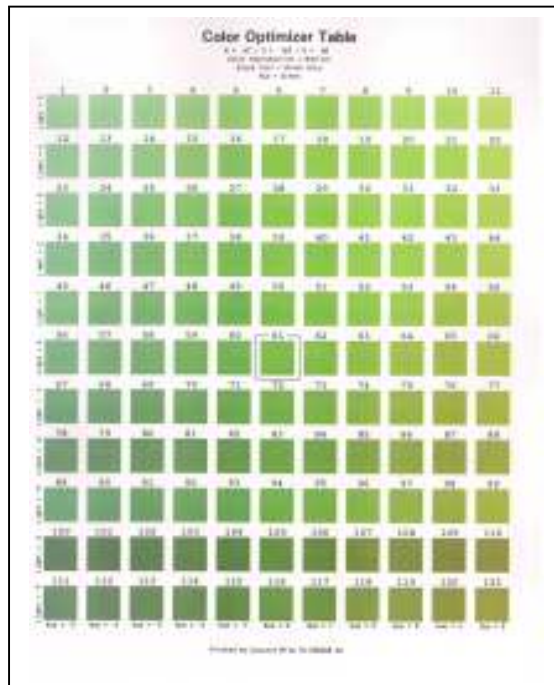


The Color Reproduction and Black Text options help the user to choose a color correction setting on the Imaging Tab in the KX Driver. The user can select Monitor or Vivid in Color Reproduction and Black only or 4-Color under the Black Text selection. The defaults are Monitor and Black Only.

If the User would like to adjust the selected color further, click the 'Print Color Table' button and you will get a color optimizer table matrix print out of 121 different shades of your selected color. Simultaneously the 121-color selection grid and the text box are enabled, displaying the default color # 61. At this point, you can choose one color from the table to best match the target color by selecting the number in the grid that corresponds with the matrix print out.



Example of Color Optimizer Table Matrix print out



Click the 'Apply' button to save these settings into the custom colors in the Optimizer. Click the OK button to save the values of Hue and lightness for the particular color onto the KX Driver color settings.

If you have support questions, please contact the Kyocera Mita Diagnostic Center at 1-800-255-6482, or email us at support@kyoceramita.com.